

Consolidated report on Specific facilities provided for women in terms of

- a. Safety and security
- b. Counselling
- c. Common Rooms
- d. Day care Centre for young children

Safety and Security:

The Institute has a 30.76-acre campus, accommodates a 550 bedded hospital block, 4 storied College block, staff quarters, 3 blocks of hostels each with 6 floors with mess facilities and indoor and outdoor recreation facilities. The number of women in the administrative and housekeeping departments is more than men.

The campus has well-lit pathways and cross ways from the main gate to the hostel, hospital and college blocks. There are separate hostels for boys and girls with caring, dedicated and responsive wardens with appropriate security arrangements for boys and girls. There are rest room facilities for boys and girls in all the blocks of the campus.

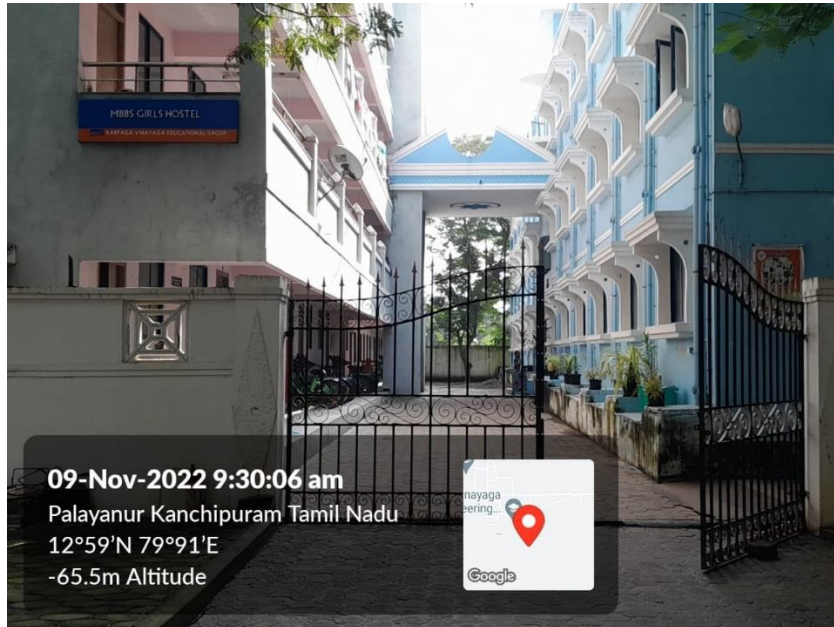
Day scholars are transported to the Institute by a secure fleet of buses which are operated by experienced and responsible drivers. We have girls' and boys' common rooms separately. The female students have access to physical fitness, Yoga and cycling within the campus.

The Institute has established contact with a nearby police station. College employs a network of CCTV cameras and security guards who are strategically placed throughout the campus. The hostels have established system of recording in and out time, which are monitored by warden. The girls are housed in a separate double gated building.

Counselling:

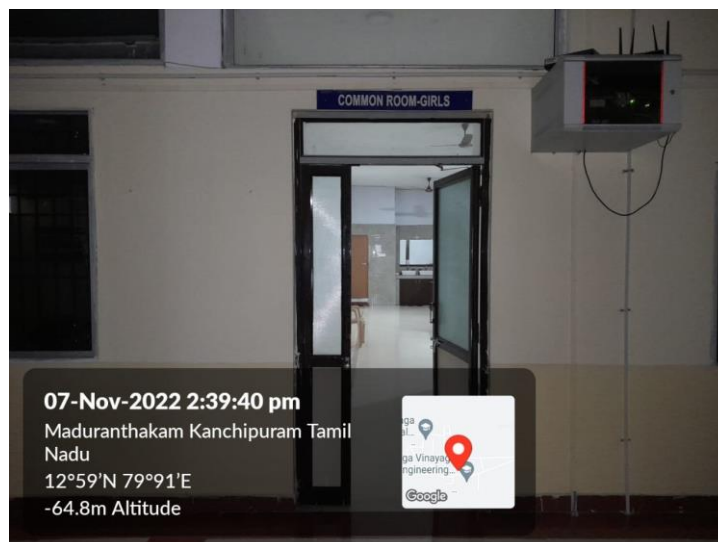
Counselling is given at the time of admission, during orientation program and also through the academic years. A well-structured mentoring scheme is followed regarding student's academic performance, personality building, adherence to dress code, emphasis on moral values and future guidance. In addition, the faculty regularly promote gender equality and build a best class room environment that nurtures budding students.

Double-gated Ladies hostel

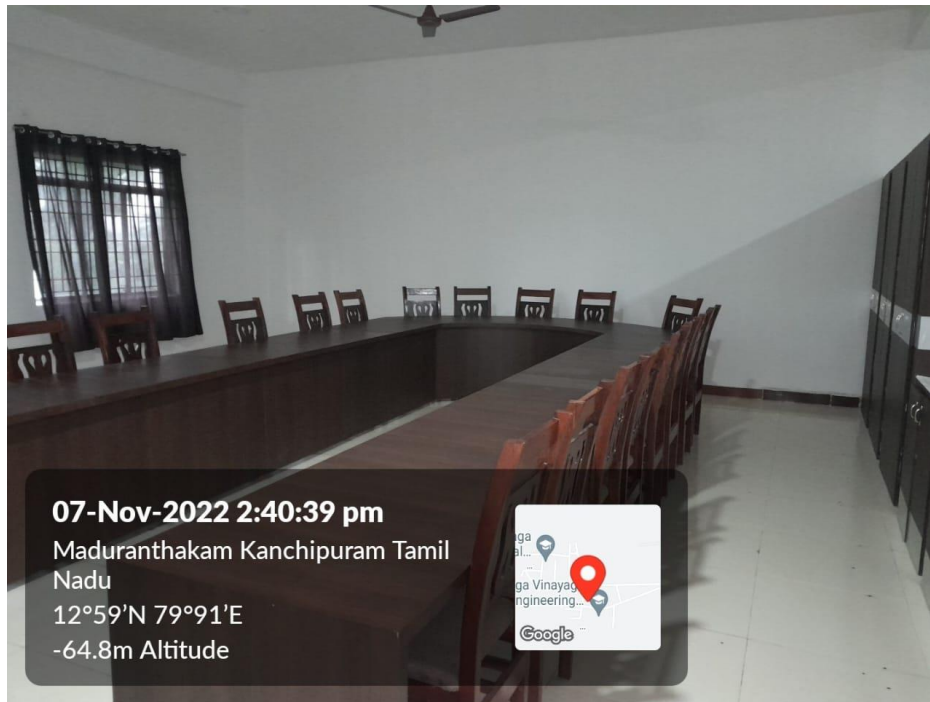


Common rooms:

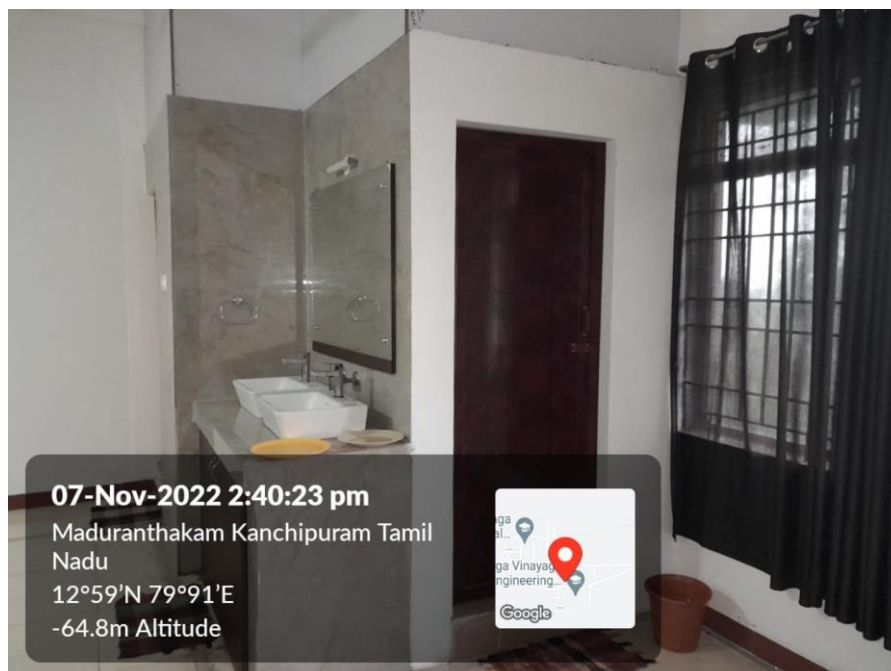
There is common room for the girls with attached toilet and basic amenities like dressing table, cot and coach.



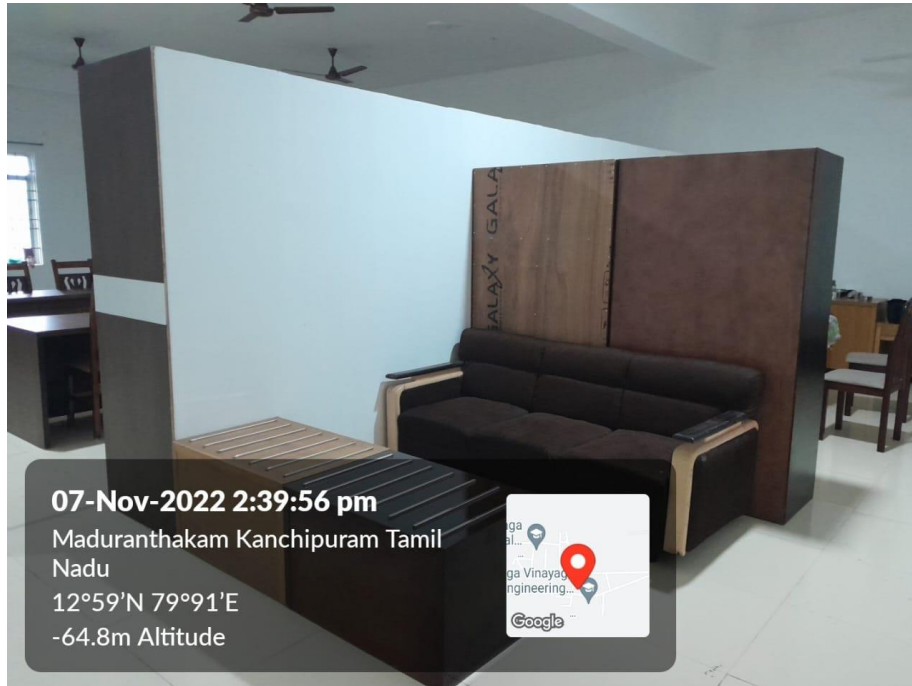
Dining facility in Girl's common Room



Attached toilet



Facilities for seating



Sudhama
Principal
Karpaga Vinayaga Institute of
Medical Sciences
G.S.T. Road, Chinna Kolambakkam,
Palayanoor Post,
Maduranthagam - 603 308